

SimpleK®, leading-edge
Master Keying, Key & Facility Management Software



- Easily manage master key systems, keys, key rings, key holders, buildings, floors, doors, requests, work orders, floor plans (add-on modules: items, assets, rooms, public safety incident and daily reports);
- Provide total key control showing outstanding keys, overdue keys and rings (with automatic notifications), key symbols, bittings, keyways, etc.;
- Capability to include all your systems (*multiple key manufacturers supported*) and buildings in ONE database (*using professional SQL databases*);
- User-friendly and comprehensive interface with Tree View to explore data;
- Have true “know before you go” detail of every piece of hardware on a door, include the complete door hardware schedule and maintenance log;
- Create requests for maintenance or service and track maintenance history on any door;
- Floor plans with icons showing the location of every door, linking to complete door hardware information, associated keys and list of key holders. Easily locate any door (*direct link from door records and datagrid to diagram*);
- Automatic configurable key numbering (*by key or general for sequence numbers*);
- Core pinning calculator (*for many system types*);
- Master Key System Generator;
- Easily import master key systems, key distribution lists, buildings, doors and people with customizable MS Excel import templates;
- **New Mobile Applications** for Key Deliveries & Door Surveys (*see add-on modules section for more details*);
- Link photographs, signatures and documents of individuals holding keys, doors, buildings, door hardware, etc.;
- Network, multi-users with highly detailed access security configuration by users and groups (*permissions by systems, tables, fields, functions, etc.*);
- Manage deposits, fees & refunds;
- Manage and improve your key control workflow and processes;
- Use of devices like signature capture, barcode and RFID readers for efficient and paperless processes;
- Connection with key cutting machines
- Use *SyncSimpleK* to synchronize with your human resources or access control database (*Compatible with Active Directory*);
- Many configurable reports with printing and MS Excel export tools;
- Flexible, customizable and many configuration options (*adapt text labels to your terminology, customize the forms and templates, define your color labels, etc.*);
- Add-on modules are available to extend the software possibilities according to your needs (*Web Interface, Item Tracking, Room Management & Mobile Apps.*);
- Developed by Prosystem inc., a company of professionals in software engineering, serving important business for 25 years;
- Technical support 24/7 (email, phone or web meeting);
- And much, much more!



SimpleK is a Unique, Fully Integrated Solution

SimpleK offers a scalable, flexible and fully integrated key management solution that can be used from basic stand alone to thousands of users. No other software on the market today offers such an advanced and complete solution for “Key & Facility Management”.

SimpleK combines all software tools needed by locksmiths, facility managers, customer service, human resources, department managers, security officers and any other people involved in the key control processes.

Information Management (Record Keeping)



SimpleK relies on a strong relational database to manage all the information about:

- Master Key Systems;
- Keys & Duplicates;
- Key Rings;
- Key Holders;
- Buildings, Doors & Rooms;
- Door Hardware, etc.

All this information can then be shared across multiple users with permission restrictions. The database can also be interfaced with other databases or systems.

Advanced Locksmithing Functions



SimpleK provides locksmiths with advanced functions to create master key systems, manage future expansion, do core pinning calculations, verify ghost keys, easily register core changes, etc. Thus, Locksmiths do not need to use multiple different software and try combining or synchronizing all their data; everything is done within SimpleK.

Processes & Workflow



To ensure data accuracy and reliability, SimpleK improves efficiency in all key management processes such as key requests, key issuances, deposits, key returns, refunds, core changes, door maintenance, investigations, etc. SimpleK is flexible and offers many configuration options to really fit with your field activities: it eliminates hassles and facilitates the workflow.

Web Interface



To easily share access to multiple users over your Intranet, SimpleK is the only advanced key management solution offering a Web Interface. Users connect with a web browser (i.e. they do not need the thick application installed on their workstation). They have restricted access according to their privileges, such as key requests, personal inventories, key management, etc. The credentials are compatible with Active Directory.

Mobile Applications



SimpleK now gives you even more extensive possibilities with its new mobile applications.

SimpleK Mobile for Key Deliveries

The SimpleK Mobile app allows you to transfer the Key Delivery transactions to your mobile device, display your key policy and agreement form to the key holders, deliver the keys, register the transactions and capture the holders' signatures. How could Key Control be made easier?

InspectO Mobile for Door Surveys

The InspectO Mobile app allows you to register your Door Data, in the field, with your mobile device. You can transfer the list of Doors from your SimpleK database to your mobile device, walk your facility, enter or complete your door records (keying, description, type of lock, door hardware, etc.), capture pictures of your doors and transfer all this data back to your SimpleK database.



Data Sheet

PR03-3000-DPU-113-04
 2014-01-16
 Page 4 of 8

Standard & Professional Editions

Designed for buildings or large complex facilities, SimpleK offers many types of solutions, in accordance with your particular needs and is offered in two editions: *Standard and Professional*.

<i>SimpleK Editions</i>	<i>Standard</i>	<i>Professional</i>
Database Type	File / SQL	File / SQL
Maximum Number of Concurrent Users <i>(included with the Primary License)</i>	3	3
Additional Concurrent Users <i>(requiring Additional Licenses)</i>	-	Optional
Max. Number of Records ¹	Unlimited	Unlimited
Reports, History & Forms	√	√
Security (Users & Groups)	√	√
Linked Documents <i>(Pictures, pdf, xls, doc, etc.)</i>	√	√
Import Templates	√	√
Diagrams <i>(Maps & Floor Plans)</i>	√	√
Door Hardware	√	√
Advanced Locksmith Functions <i>(Core Pinning Calculator, Master Key Generator, Core Change Wizard, etc.)</i>	√	√
Authorized Holders with Schedules for Key Rings	-	√
Deposits, Refunds & Fees	-	√
Key Requests <i>(management of key requests)</i>	-	√
Work Orders & Purchase Orders	-	√
Wizards Std. <i>(Door Creation, Key Issuance, Key Ring Issuance, Core Change and Key Return)</i>	√	√
Wizards Pro. <i>(General Issuance, Key Delivery, Filter / Sort Datagrids)</i>	-	√
Order Receipt <i>(import data from your key provider)</i>	-	√
Compatibility to Signature Capture Devices	√	√
Compatibility to RFID & Bar Code Technologies	-	√
Compatibility to ITL Key Cutting Machines	√	√
Compatibility to Add-On Modules	-	√
SyncSimpleK <i>(Data Interface Service)</i>	-	√

¹ The maximum number of records is not limited by SimpleK but depends on the maximum database size, according to the database type used (File, MS SQL or MySQL).

Add-On Modules

Benefit from a fully integrated, powerful and yet affordable solution! For more advanced features related to Key Control, Physical Security or Facility Management, we offer four add-on modules that can be added to the **Professional Edition**:

Mobile Applications

This new add-on module is a package that includes two mobile applications:

- **SimpleK Mobile App** for Key Deliveries
- **InspectO Mobile App** for Door Surveys

Both applications run on Android and iOS mobile devices and are compatible with SimpleK integrated features for ease-of-use and data transfer.



Item Tracking

Manage issuance of items like uniforms, phones, laptop computers, walky-talkies, vehicles, etc. Define your items (assets) by services, categories and models. Each service can be managed separately (assigning security permission levels). Be notified of overdue items. Moreover, all items issued to one person can be seen in a single report with keys and key rings. Is compatible with the Web Interface Module.



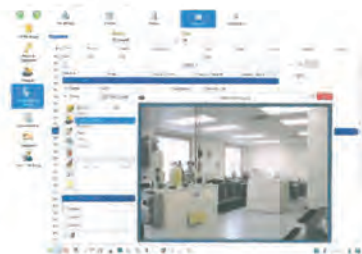
Web Interface

Grant limited access to some specific tasks related to SimpleK, over your Intranet (locally hosted), by using only a web browser. For example, department managers may need to fill a form to submit key requests or verify status of existing requests. Another example, people from human resources may need to validate that a terminating employee has returned all his keys.



Space & Rooms

This module allows you to manage the detailed information of your premises, according to the following categories: Dimensions, Occupancy, Architectural, Equipment, Fire & Safety, Housekeeping, Mechanical & HVAC and Electrical. Also functions for reports, history, emails and work orders help you improve your monitoring and maintenance processes.

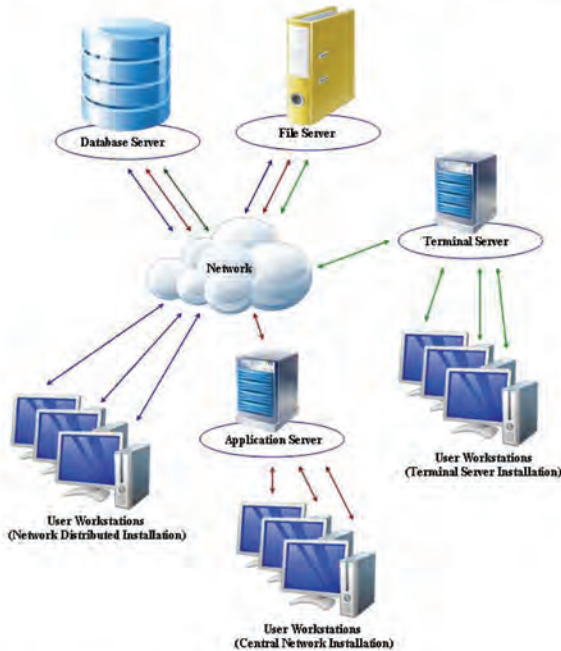


Flexible configuration options

For more efficiency and reliability, SimpleK offers different configuration patterns of distributed architecture.

The three main elements of SimpleK's configuration are: application (executable, DLL, log, etc), database (file type or SQL server) and linked documents (floor maps, pictures, signed forms, etc).

The configuration options consist of various alternatives depending where these three elements are located: *Central Network, Network Distributed and Terminal Server*



Synchronize with your people database

With **SyncSimpleK** (*SimpleK Data Synchronization Service, included with the Professional Edition*) you can synchronize People information from a source database of any kind, like **Human Resources** database, with your SimpleK database (MS SQL format); for example, the employee list from human resources.



Also compatible with Active Directory!

Strong & Reliable Database

To fully integrate all the information in a well organized and optimal manner, SimpleK relies on a strong relational



Different database formats are available:

File Database :

- Designed for small databases and few users;
- Encrypted data;
- Not compatible with Add-on Modules;

MS SQL Database :

- Intended for larger databases with many users;
- Efficient network communication;
- Can use Windows Group to configure Access rights;
- Complete Management Tools;

MySQL Database :

- Intended for larger databases with many users;
- Can be installed on a many Operating Systems;

Licensing

SimpleK's licensing is concurrent use: licenses are based on the number of simultaneous users accessing the program. For example, in a three-user concurrent use license, when three users are logged on to the program, the fourth user is prohibited. When any one of the first three logs off, the next person can log on. This also means that the software can be installed on more computers than the number of licenses.

Paperless processes

SimpleK helps improve your key control processes in many ways with integrated forms, wizards, and by removing paper from signing documents (e.g. *key issuance agreement*). SimpleK is compatible with Topaz Systems electronic signature capture products, **allowing electronics handwritten signatures to be bound directly to digital documents**. It will generate detailed, time-stamped document history of the entire approval process.



Save time and money by replacing paper processes with electronic signature and document solutions!

Data importing tools

Migrating to a new management system always brings many concerns; a major one is: "Will we be able to collect our existing data and transfer it to the new system?" SimpleK offers many tools to do it easily, you can create your own customized MS Excel import template like Key List, People List, Duplicate Distribution List and Door Survey by selecting the fields you need. Prosystem inc. can also program a tailored import function to transfer directly from your existing database.

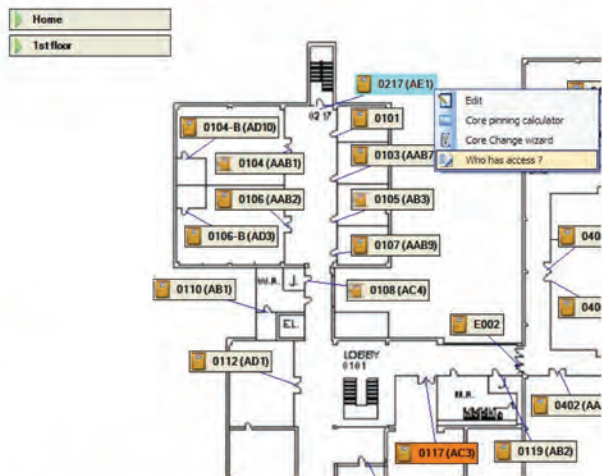


Easily migrate your existing data!

"A diagram is worth a thousand words"

What's better than a floor plan to quickly locate the specific door you were talking about! Well, an electronic diagram tool with search engine could even do it better.

SimpleK allows you to import maps and floors plans (*converted dwg to jpg, bmp or gif*) and add door icons to dynamically link it to your database. This way you can navigate quickly from your door datagrid to floor plan, click and access your complete door information with associated keys, hardware, core pinning, core change wizard, "Who has access", etc.



Locate the appropriate door in one single click!

RFID and Bar Code Technologies

Streamline your issuance and return processes using RFID or Bar Code tags and readers. Use the tags (labels, inlays, etc) to identify Key Rings and Items (to configure, you can easily scan them and select the associated SimpleK records). Use ID cards to identify your people (is compatible with many access control systems' card types).





System Requirements

User Workstation Minimum Requirements

Operating system	Windows Server 2003 or later, Windows XP Pro, Windows Vista, Windows 7 or Windows 8
Processor	2.0 GHz or faster 32-bit (x86) or 64-bit (x64)
RAM	At least 1 GB RAM (32-bit) or 2 GB RAM (64-bit) ; should be increased as database size increases to ensure optimal performance.
Hard drive	200 Mb of available hard-disk space
Display	VGA display with 1024x768 resolution or higher

Database Server Compatibility

Microsoft SQL Server	MS SQL Server 2005, 2008, 2008R2 or 2012 (32 or 64 bit, Express or other editions)
MySQL	MySQL version 5.1 on Windows

Web Server Compatibility (for the Web Interface Module)

Microsoft Internet Information Services (IIS)	IIS v5.0 or later
Additional components	ASP.NET AJAX (Microsoft)

File Server Recommended Requirements

Hard drive	(May vary greatly according to the facility size, number and type of shared documents, key issuance process, etc.) Minimum: 200 MB of available hard-disk space; Recommended: 1 GB of available hard-disk space.
Additional components	Backup utility software.