

Cores and Cylinders



IC Core



Model Number ___ MBS

Description ___ Small format
Interchangeable
Core

Finishes ___ 606 - Satin Brass
613 - Anodized Oil
Rubbed Bronze
626 - Satin Chrome

- Compatible with housing from Arrow, Best and Falcon
- Cores are available combined or uncombined
- 14 standard keyways, 4 T series keyways, 6 premium keyways

Configurations for IC Core cylinders:

STANDARD KEYWAYS

6 and 7 Pin

A
B
C
D
E
F
G
H
J
K
L
M
Q
R

T SERIES KEYWAYS

6 and 7 Pin

TB
TC
TD
TE

PREMIUM KEYWAYS

7 Pin Only

WA
WB
WC
WD
WG
WH

RESTRICTED KEYWAYS

7 Pin Only

YA
YB

How To Order Uncombined

Model Number	Pin Length	Keyways	Finish
MBS-IC	7	A	626

How To Order Combined

Model Number	Pin Length	Keyways	Combined	Finish
IC	7	A	COMB	626

Rim IC Housing



- Compatible with cores from Arrow, Best and Falcon
- Furnished with collar mounting plate & screws
- Tailpiece converts between horizontal & vertical positions
- Solid brass or bronze construction

Rim IC housing

MODEL #

MBS - ICR

Description — IC rim housing
7 pin length
6 pin length

Finishes — 605 - Bright Brass
606 - Satin Brass
612 - Satin Bronze
613 - Anodized Oil Rubbed Bronze
625 - Bright Chrome
626 - Satin Chrome

How To Order

Model Number

Pin Length

Finish

MBS-ICR

7

626

* Omit cam selection when ordering ICR housing



Mortise IC Housing



Model Number ___ MBS-ICT
Description ___ IC mortise housing
 Tapered shoulder

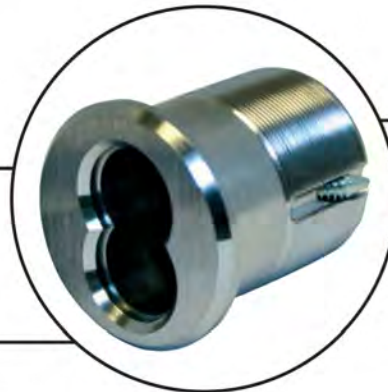
Description ___ IC mortise housing
 7 pin length
 6 pin length

Finishes ___ 605 - Bright Brass
 606 - Satin Brass
 612 - Satin Bronze
 613 - Anodized Oil
 Rubbed Bronze
 625 - Bright Chrome
 626 - Satin Chrome



- Compatible with housing from Arrow, Best and Falcon
- Removable designs allows changing of cams
- Solid brass construction
- 6 popular cams

Model Number ___ MBS-ICM
Description ___ IC mortise housing
 straight shoulder



How To Order	Model Number	Finish	Cam
Tapered	MBS-ICT	626	AR
Straight	MBS-ICM	626	AR

Large Format Mortise IC housing



Model Number ___ MBS-ICS
Description ___ IC mortise housing
 Straight shoulder

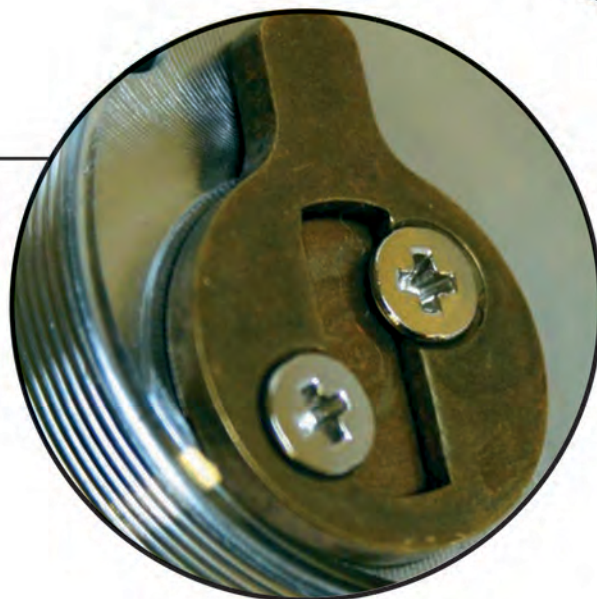


- Compatible with Schlage large format IC core
- Removable design allows for changing cams
- Solid brass construction

How To Order	Model Number	Finish	Cam
Straight	MBS-ICS	626	SA

Mortise Cam Chart

- Removable designs allows changing of cams
- Solid brass construction
- 6 popular cams



CAM2-AR



CAM2-CL



CAM2-MB



CAM2-SA

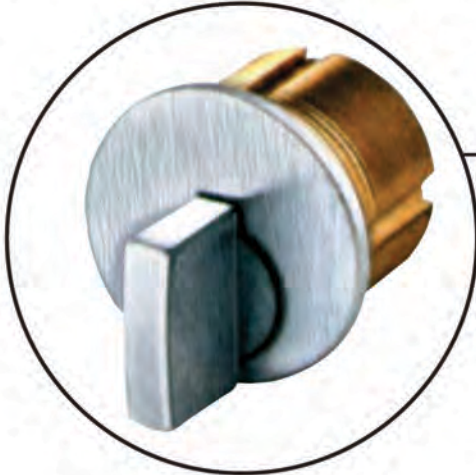


CAM2-SL

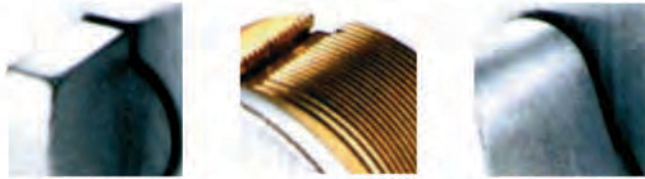


CAM2-ST

Mortise Thumb Turn Cylinder

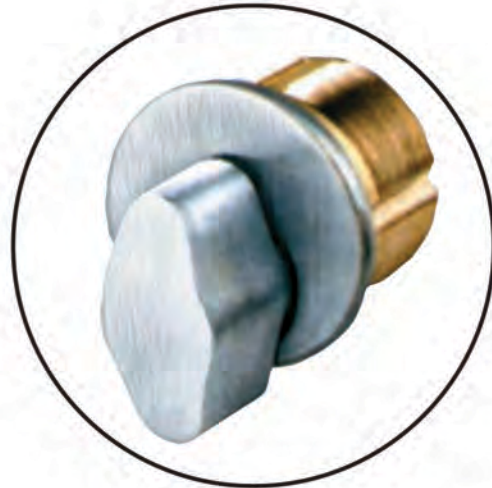


Model Number ___ M100T
Description _____ 1" length,
 Solid brass turn piece



- Solid brass or die-cast turn piece
- Solid brass housing
- 4 popular lengths
- 5 popular cams

Description _____ mortise thumb turn cylinder
 7 pin length
 6 pin length
Finishes _____ 605 - Bright Brass
 606 - Satin Brass
 612 - Satin Bronze
 613 - Anodized Oil
 Rubbed Bronze
 625 - Bright Chrome
 626 - Satin Chrome



Model Number ___ M156T
Description _____ 15/16" length

Mortise Dummy Cylinder



- Non-hollow solid brass construction
- 4 popular lengths
- Precision threads

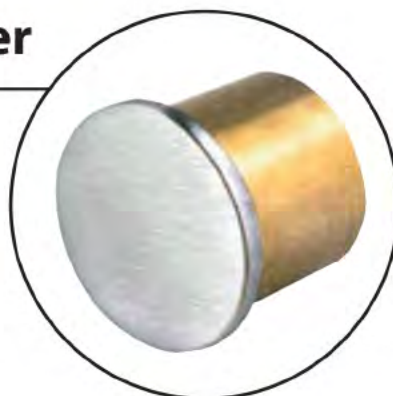
Model Number ___ M156D
Description _____ 15/16" length

Model Number ___ M118D
Description _____ 1-1/8" length,

Model Number ___ M100D
Description _____ 1" length

Model Number ___ M114D
Description _____ 1-1/4" length,

Rim Dummy Cylinder



- Solid brass housing
- Furnished with collar, mounting plate & screw

Model Number ___ R118D
Description _____ 1-1/8" length

Description _____ mortise dummy cylinder
 7 pin length
 6 pin length
Finishes _____ 605 - Bright Brass
 606 - Satin Brass
 612 - Satin Bronze
 613 - Anodized Oil
 Rubbed Bronze
 625 - Bright Chrome
 626 - Satin Chrome



Marshall Best Security Corporation

www.marshallbestsecurity.com

13097 Parkside Drive, Suite B

Fishers, IN 46038

317-806-1180